



Single-Stream Recycling Service

This means you can put all your recyclables together, no sorting needed! Use your green cart with the yellow lid to place all your standard recyclables together. Place your carts at the curb no earlier than sundown on the day before collection or no later than 7 a.m. the day of collection. After collection, all carts should be removed from the front yard no later than the evening of your collection day.



Chipboard and Boxboard
Like empty cereal and cracker boxes.



Brown Paper Bags



Phone Books, Books, Catalogs and Magazines



Newspapers



Paper Cardboard, Dairy and Juice Containers



Junk Mail
Including envelopes.



Glass Bottles and Jars



Office and School Paper



Cardboard
Flatten all boxes.



Plastic Bottles and Containers #1-#7
Return plastic bags to retail store collections.



Aluminum Foil and Cans



Tin or Steel Cans



Rigid Plastics
Like milk crates, laundry baskets, and plastic toys without metal.



Pots and Pans



Trash Service

Some discarded items can be redirected to special collections. Check the Town website at www.townofburke.com to see where these collections are located. Use the green cart with the green lid only for trash that cannot be recycled. Place your carts at the curb no earlier than sundown on the day before collection or no later than 7 a.m. the day of collection.

Candy wrappers
Carbon paper
Carpet and cloth
Food-soiled cardboard

Food or any organic waste
Dry empty paint cans
Plastic bags and clear plastic wrap
Plates and dishes

Polystyrene (Styrofoam™)
Used paper cups and paper plates
Used paper towels and tissues
Waxed cardboard and paper

For further information, please contact Waste Management at 1 888 960 0008 or email wmeservice@wm.com.



THINK GREEN®



Waste Management of Wisconsin, Inc.
2418 W. Badger Rd.
Madison, Wisconsin 53713



IMPORTANT INFORMATION
inside about changes to your
waste and recycling service.



The Town of Burke has selected Waste Management to be the single provider of trash and recycling services for the community.

STARTING MAY 2, 2012



Dear Burke Resident:

Starting May 2, 2012, Waste Management will begin providing recycling services to the Town of Burke every other week. We will also continue to provide reliable weekly trash collection to Burke residents. We look forward to helping your community be as clean – and green – as possible throughout 2012 and beyond.

Making the transition from your current service to expanded service with recycling will be simple. Here are a few things to keep in mind:

New Carts

Each residence will receive a 64-gallon cart for waste serviced weekly and a 64-gallon cart for recycling serviced every other week, both to be delivered between April 23 and April 28. Carts may be delivered any day during this time. Starting May 2, 2012, we will service only these new carts. Please use the green cart for trash only and the green cart with the yellow lid for recyclables only. The weight limit for each cart is 200 pounds.

Old Recycle Bins

Old recycle bins will not be collected. Please feel free to keep yours for personal use or recycle it in your new 64-gallon cart.

Cart Placement

Containers need to be at least 2 feet away from each other and any fixed objects. All carts should go to the curb for collection with the handles facing the house. If you are having a problem with slopes or the wind, simply rotate the cart a quarter-turn, placing the handle toward the wind. This helps keep the lid closed and the cart upright.

Hazardous Items

Waste Management will not collect solid or liquid hazardous waste. Examples include paint; pesticides; petroleum derivatives, such as motor oil and solvents; and explosive items.

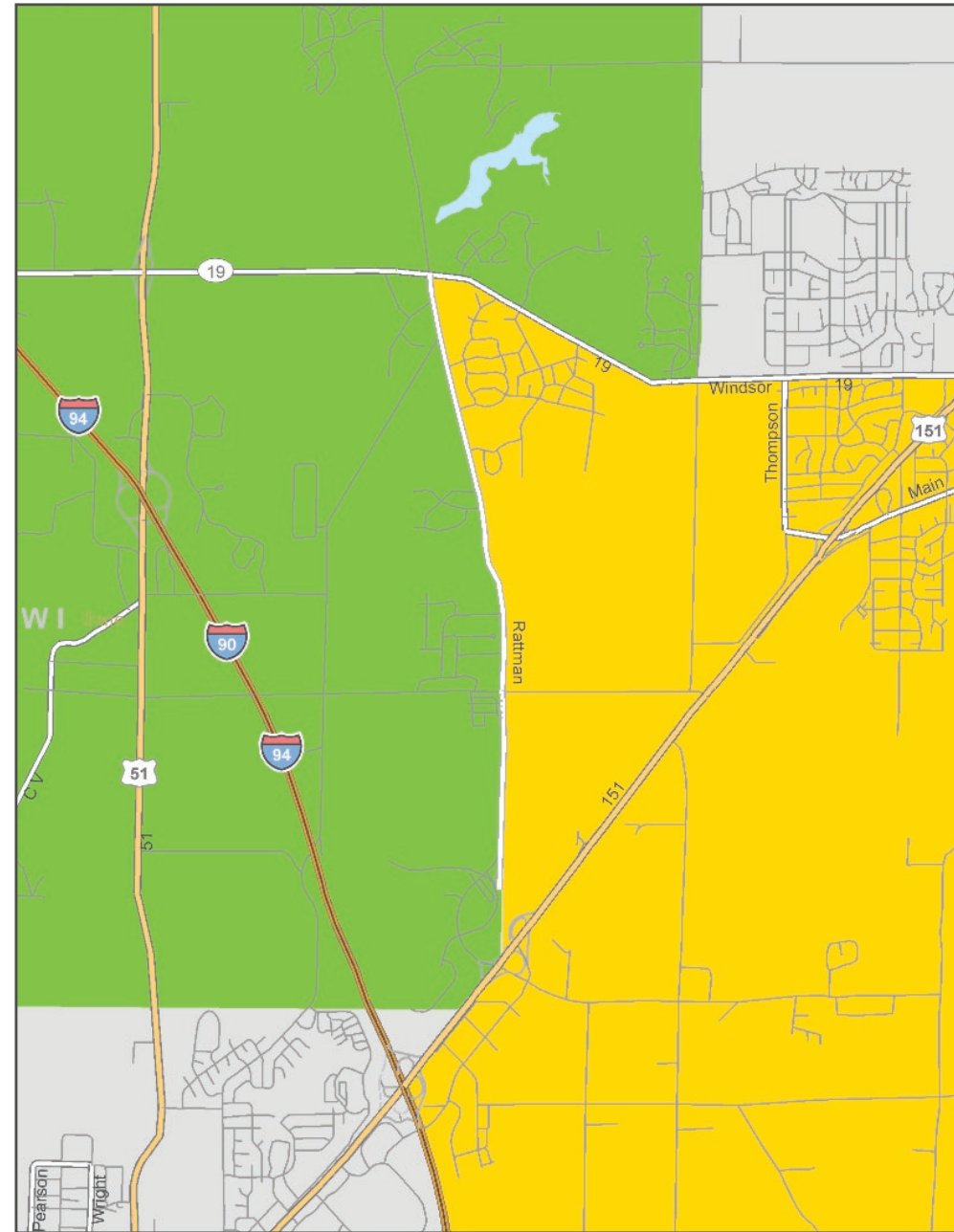
For further information, please contact Waste Management at 1 888 960 0008 or email wmeservice@wm.com.



THINK GREEN®

Burke Service Zones

Please locate your home on this map to determine which week your recyclable materials will be collected. Then use the 2012-2013 Collection Schedule to determine if your area falls on a Green or Gold week of service. Detach your card for future reference. **Trash will be picked up every Wednesday.**



Waste Management will observe and protect privacy rights and trade secrets. Unless given permission, we will not reveal any information that identifies customers or the composition of their solid waste to any person except the Town of Burke or as required by law.

2012-2013 Collection Schedule

Detach and save this card for future reference. Fill in your **recycle pickup week** on the right, using the Service Zone map.

Waste Management will collect trash and recycling between 7 a.m. and 6 p.m. on Wednesday of your designated service week.

Holidays

- Memorial Day** – Monday, May 28, 2012
Service will be delayed 1 day
- Independence Day** – Wednesday, July 4, 2012
Service will be delayed 1 day
- Labor Day** – Monday, September 3, 2012
Service will be delayed 1 day
- Thanksgiving Day** – Thursday, November 22, 2012
No Delay
- Christmas Day** – Tuesday, December 25, 2012
Tuesday service will be delayed 1 day
- New Year's Day** – Tuesday, January 1, 2013
Tuesday service will be delayed 1 day

If a scheduled collection day falls on a holiday or the day after, collection will be delayed one day. For example, Wednesday customers will be serviced on Thursday. Should there be a permanent change in your collection day, we will notify you in advance.

Missed Collection

Despite our best efforts, we occasionally miss scheduled collections. If we do, please call us as soon as you can. We'll try to return on the same day to pick it up, without charge. If our driver has already left the Town of Burke, we'll pick up at the missed stop the following day.

Curbside Timing

Place your carts at the curb no earlier than sundown on the day before collection or no later than 7 a.m. the day of collection.

For further information, please contact Waste Management at 1 888 960 0008 or email wmeservice@wm.com.



Pickup Week

May							June						
S	M	T	W	T	F	S	S	M	T	W	T	F	S
		1	2	3	4	5						1	2
6	7	8	9	10	11	12	3	4	5	6	7	8	9
13	14	15	16	17	18	19	10	11	12	13	14	15	16
20	21	22	23	24	25	26	17	18	19	20	21	22	23
27	28	29	30	31			24	25	26	27	28	29	30

July							August						
S	M	T	W	T	F	S	S	M	T	W	T	F	S
1	2	3	4	5	6	7				1	2	3	4
8	9	10	11	12	13	14	5	6	7	8	9	10	11
15	16	17	18	19	20	21	12	13	14	15	16	17	18
22	23	24	25	26	27	28	19	20	21	22	23	24	25
29	30	31					26	27	28	29	30	31	

September							October							
S	M	T	W	T	F	S	S	M	T	W	T	F	S	
						1			1	2	3	4	5	6
2	3	4	5	6	7	8	7	8	9	10	11	12	13	
9	10	11	12	13	14	15	14	15	16	17	18	19	20	
16	17	18	19	20	21	22	21	22	23	24	25	26	27	
23	24	25	26	27	28	29	28	29	30	31				
30														

November							December						
S	M	T	W	T	F	S	S	M	T	W	T	F	S
						1							1
4	5	6	7	8	9	10	2	3	4	5	6	7	8
11	12	13	14	15	16	17	9	10	11	12	13	14	15
18	19	20	21	22	23	24	16	17	18	19	20	21	22
25	26	27	28	29	30		23	24	25	26	27	28	29
							30	31					

January							February							
S	M	T	W	T	F	S	S	M	T	W	T	F	S	
		1	2	3	4	5							1	2
6	7	8	9	10	11	12	3	4	5	6	7	8	9	
13	14	15	16	17	18	19	10	11	12	13	14	15	16	
20	21	22	23	24	25	26	17	18	19	20	21	22	23	
27	28	29	30	31			24	25	26	27	28			

March							April							
S	M	T	W	T	F	S	S	M	T	W	T	F	S	
						1							1	2
3	4	5	6	7	8	9	7	8	9	10	11	12	13	
10	11	12	13	14	15	16	14	15	16	17	18	19	20	
17	18	19	20	21	22	23	21	22	23	24	25	26	27	
24	25	26	27	28	29	30	28	29	30					
31														



THINK GREEN®