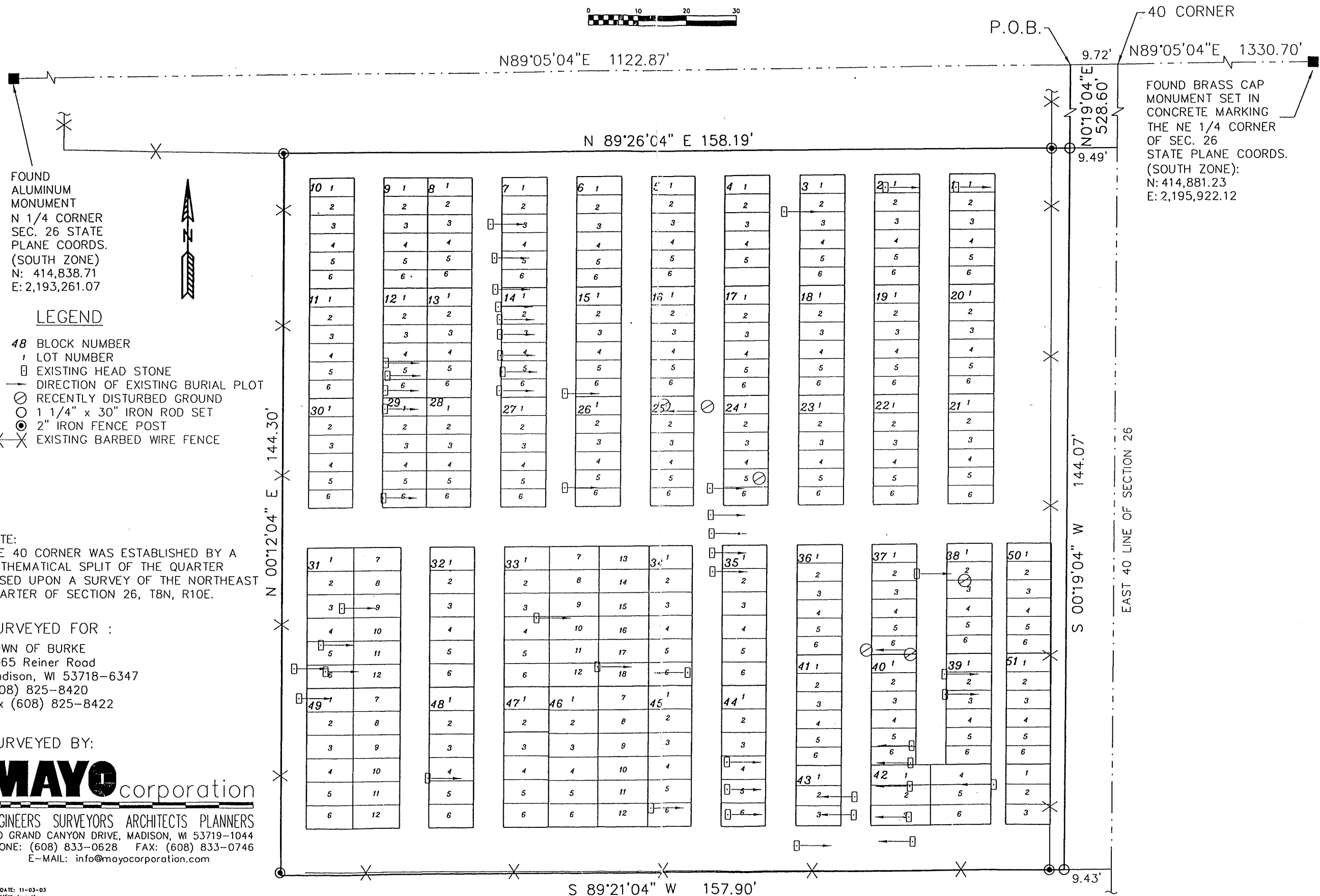
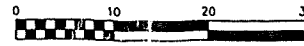


BURKE SCHOOL CEMETERY

PART OF THE NORTHWEST QUARTER OF THE NORTHEAST QUARTER OF SECTION 26, T8N, R10E
TOWN OF BURKE, DANE COUNTY, WISCONSIN



FOUND BRASS CAP
MONUMENT SET IN
CONCRETE MARKING
THE NE 1/4 CORNER
OF SEC. 26
STATE PLANE COORDS.
(SOUTH ZONE):
N: 414,881.23
E: 2,195,922.12

FOUND
ALUMINUM
MONUMENT
N 1/4 CORNER
SEC. 26 STATE
PLANE COORDS.
(SOUTH ZONE)
N: 414,838.71
E: 2,193,261.07

LEGEND

- 48 BLOCK NUMBER
- 1 LOT NUMBER
- EXISTING HEAD STONE
- DIRECTION OF EXISTING BURIAL PLOT
- RECENTLY DISTURBED GROUND
- 1 1/4" x 30" IRON ROD SET
- 2" IRON FENCE POST
- ✕ EXISTING BARBED WIRE FENCE

NOTE:
THE 40 CORNER WAS ESTABLISHED BY A
MATHEMATICAL SPLIT OF THE QUARTER
BASED UPON A SURVEY OF THE NORTHEAST
QUARTER OF SECTION 26, T8N, R10E.

SURVEYED FOR :
TOWN OF BURKE
5365 Reiner Road
Madison, WI 53718-6347
(608) 825-8420
fax (608) 825-8422

SURVEYED BY:

MAYO corporation

ENGINEERS SURVEYORS ARCHITECTS PLANNERS
600 GRAND CANYON DRIVE, MADISON, WI 53719-1044
PHONE: (608) 833-0628 FAX: (608) 833-0746
E-MAIL: info@moyocorporation.com