










Town of Burke Comprehensive Plan

Map 6: Natural Features

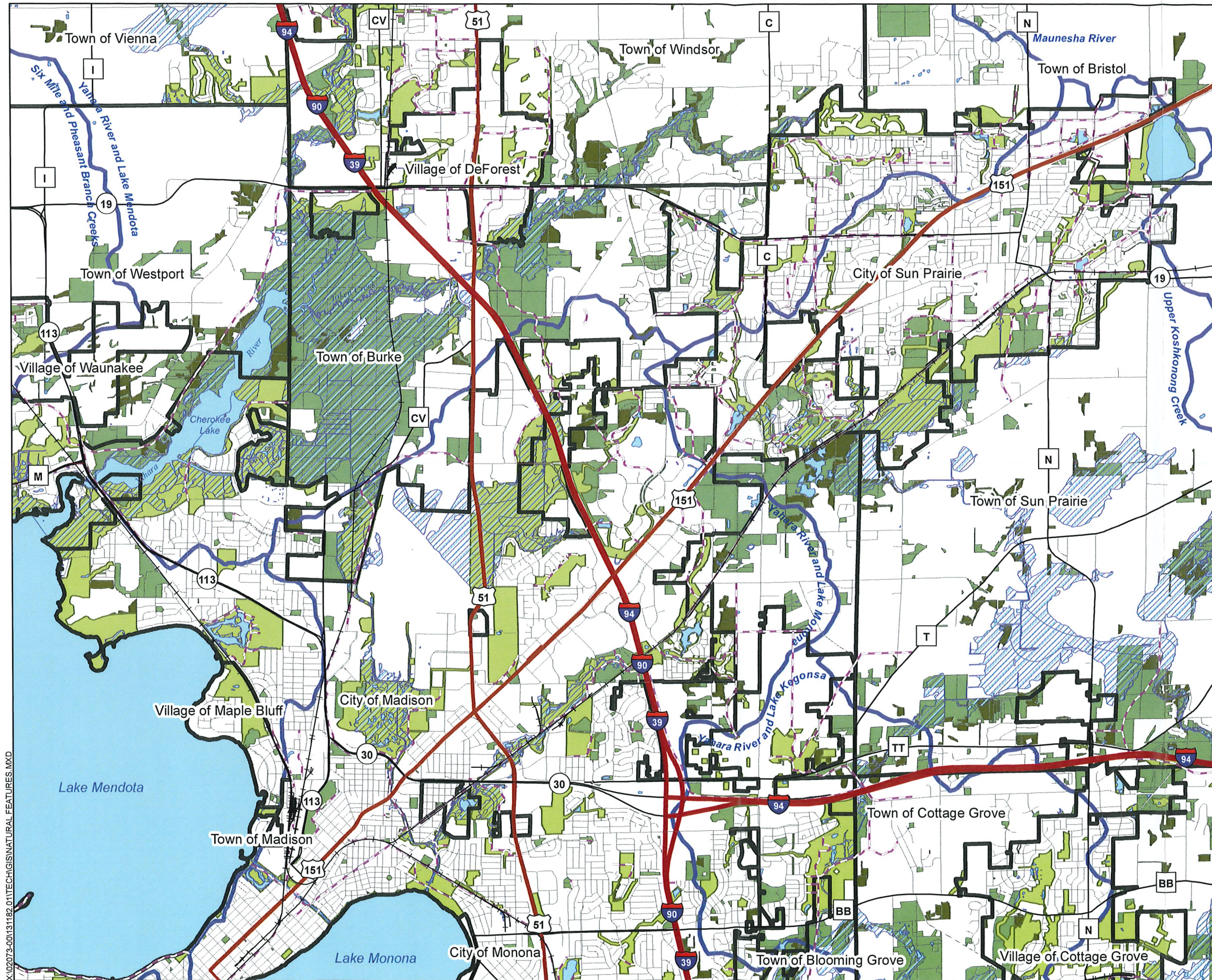
June 27, 2013

Legend

-  Municipalities
-  Floodplain
-  Watershed Boundaries
-  Water
-  Slopes > 12%
-  Environmental Corridor
-  Open Space/Recreation (including wetlands)
-  Woodlands
-  Trails



These documents shall not be used for any purpose or project for which it is not intended. Mead & Hunt shall be indemnified by the client and held harmless from all claims, damages, liabilities, losses, and expenses, including attorneys' fees and costs, arising out of such misuse or reuse of the documents. Any other use or reuse by owner or by others will be at owner's sole risk and without liability or legal exposure to Mead & Hunt. In addition, unauthorized reproduction of these documents, in part or as a whole, is prohibited.



X:\02073-00\131182_01\TECH\GIS\NATURAL FEATURES.MXD

Map Source: Dane County GIS Data 2013.



TOWN OF BURKE

