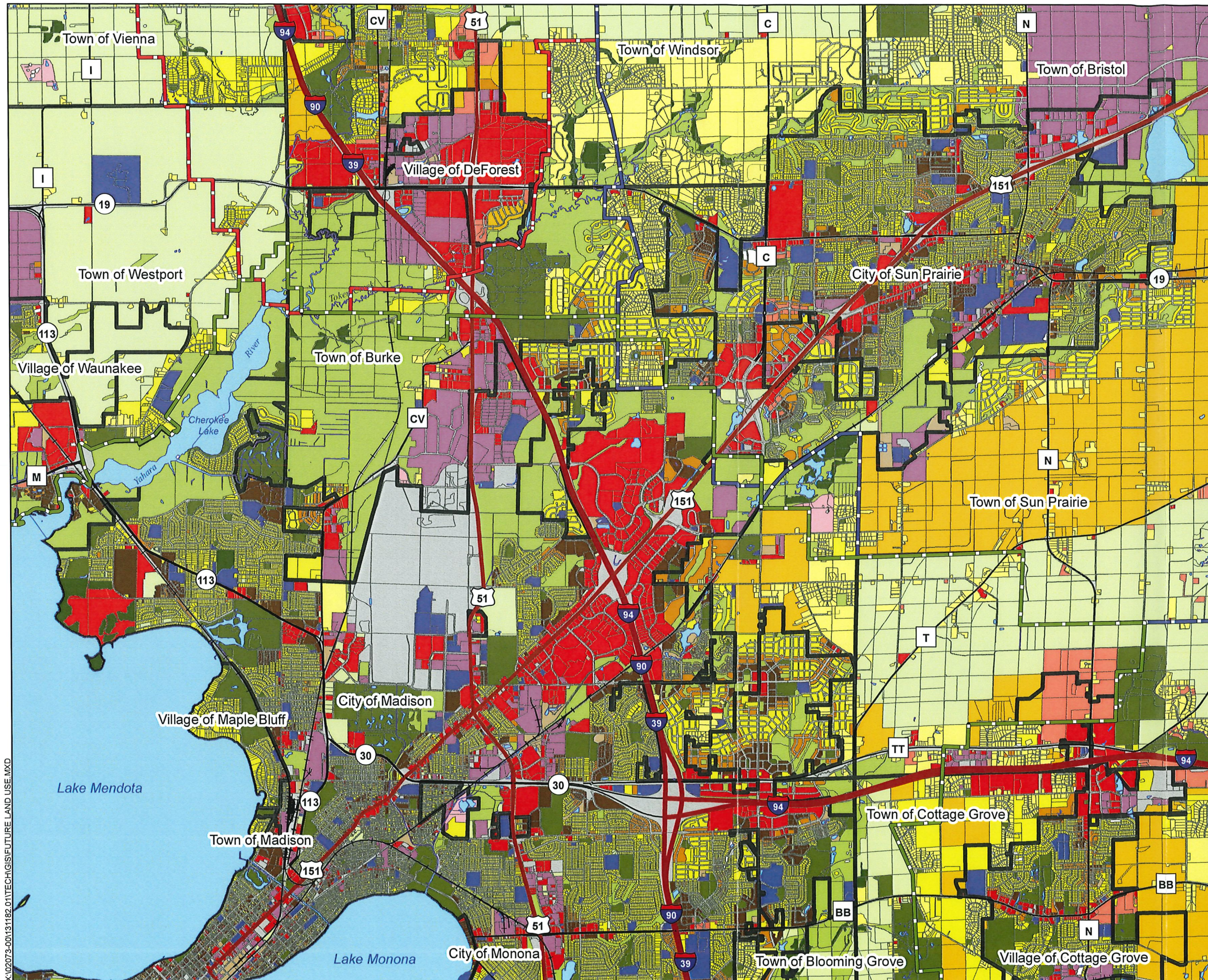


Town of Burke Comprehensive Plan

Map 8: Future Land Use

November 19, 2013



Legend

	Future Land Use
	Municipal Boundaries
	Madison ETJ
	Sun Prairie ETJ
	DeForest ETJ
	Water
	Agriculture
	Rural Residential
	Low Density Residential
	Medium Density Residential
	High Density Residential
	Planned Neighborhood / Development
	Mixed Commercial / Residential
	Commercial Retail and Services
	Institutional / Government
	Communication / Utilities
	Industrial / Business
	Extractive
	Transportation
	Natural Area
	Parks / Outdoor Recreation
	Woodland



These documents shall not be used for any purpose or project for which it is not intended. Mead & Hunt shall be indemnified by the client and held harmless from all claims, damages, liabilities, losses, and expenses, including attorneys' fees and costs, arising out of such misuse or reuse of the documents. Any other use or reuse by owner or by others will be at owner's sole risk and without liability or legal exposure to Mead & Hunt. In addition, unauthorized reproduction of these documents, in part or as a whole, is prohibited.

X:\02073-001\1182_01\TECH\GIS\FUTURE LAND USE.MXD

Map Source: Dane County GIS Data 2013.



TOWN OF BURKE

